

GRID-ON INVERTER 2 KW

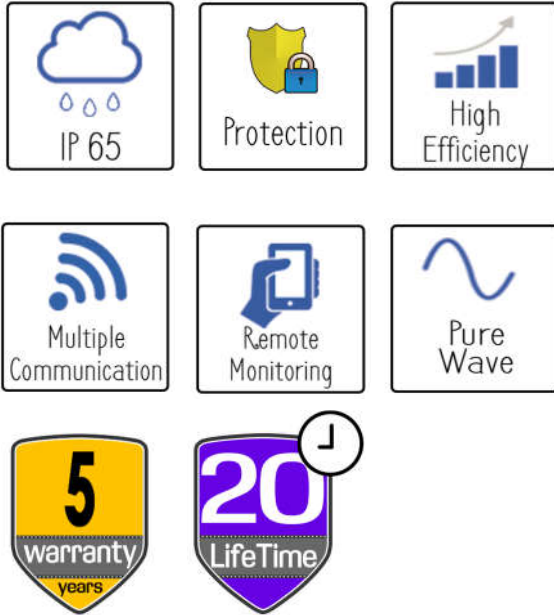
Model: **ISF-2KW**

FOR PHOTOVOLTAIC SYSTEMS



ISF-2KW

Pure Wave Inverter 2,700 W



- USA Warranty
- Long Life Components
- All spare parts available
- DC Switch & WiFi Stick (Optional)

Inverter On-Grid of 2,700 W maximum input DC power... 2,000W AC output of nominal power, Manufactured in USA, 10 years of warranty, Best quality for the best world: High performance electronic, High efficiency 97.6%, High PF .999, Good protection for weather IP 65, Multiple communication, USB 2.0, RJ45 connector and optional WiFi Stick. 20 KVA surge protection AC output and wide range voltaje: DC 100 - 550 V, AC 180 - 280 V



SOLAR FACTORY
by LED MEXICO



DISTRIBUIDOR
EXCLUSIVO
LATINOAMERICA

General Data

MEASURES (WxHxD)	30x41.5x18.5 cm
WEIGHT	17.66 KG
ASSEMBLY MODE	WALL MOUNTING
OPERATING TEMPERATURE	-25 A +60 °C
NOISE EMISSION	25 db
ALTITUDE	3,000 MSNM
NIGHT SELF-CONSUMPTION	0.5 W
ELECTRICAL ISOLATION	WITHOUT TRANSFORMER
COOLING METHOD	NATURAL VENTILATION
DEGREE OF PROTECTION	IP65
RH	0-98%
MAXIMUM EFFICIENCY	97.5 %
MPPT EFFICIENCY	99.9 %
TYPE OF CONNECTION INPUT	H4/MC4
TYPE OF AC OUTLET CONNECTION	C16/3
TYPE OF DISPLAY	LCD
TYPE OF COMMUNICATION	WIFI-USB-ETHERNET
WARRANTY	10 YEARS

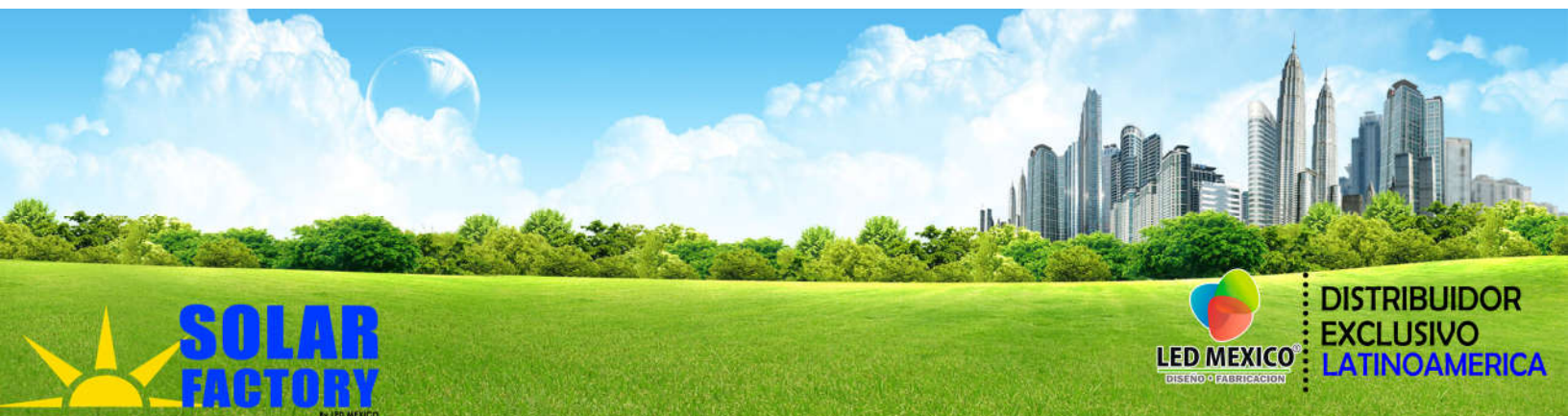
Features

DC Connection	H4 / mca
AC Connection	C16 / 3
Display	LCD / LED
Communication:	USB, WiFi, RF485



- › Reverse polarity protection
- › Anti-islanding protection
- › High current protection
- › Over voltage protection output

- › Isolated Protection
- › Grid network Monitoring
- › Current leak protection
- › CD switch for MPPT



DC INPUT DATA

MODEL	ISF-2KW
MAXIMUM POWER ON CD	2,700 W
MAXIMUM POWER FOR EACH MPPT	2,700 W
MAXIMUM CD VOLTAGE	450 V
STARTING VOLTAGE	100 V
RANGE OF CD VOLTAGE	100-500 V
MPPT VOLTAGE RANGE / NOMINAL VOLTAGE	100-450 V/360V
RANGE OF VOLTAGE FROM CD TO FULL LOAD	250-500 V
MAXIMUM INPUT CURRENT	11.0 Amp
MPPT TRACKING NUMBER	1

OUTPUT DATA AC

NOMINAL AC OUTPUT POWER	2,000 W
MAXIMUM AC OUTPUT POWER	2,200 W
MAXIMUM OUTPUT APPARENT POWER	2,500 VA
MAXIMUM OUTPUT CURRENT	10 Amp
NOMINAL VOLTAGE OF THE NETWORK	220/230/240 V
RANGE OF VOLTAGE OF THE NETWORK	180-280 V
FREQUENCY RANGE OF THE NETWORK	60 HZ +- 5 HZ
POWER FACTOR	0.99
HARMONIC CURRENTS	< 3%
TYPE OF CONNECTION TO THE AC NETWORK	MONOPHASE

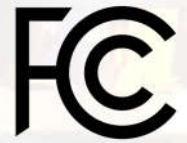
EFFICIENCY

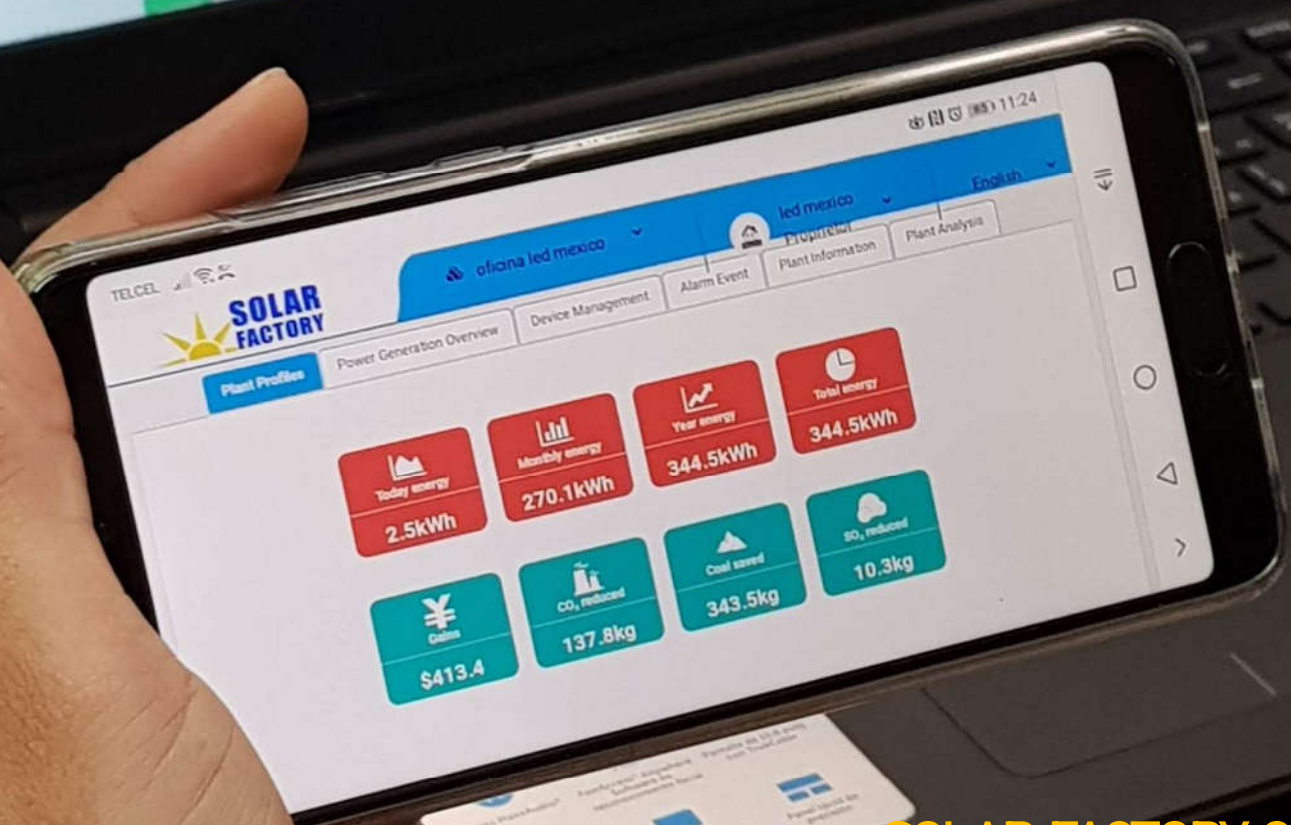
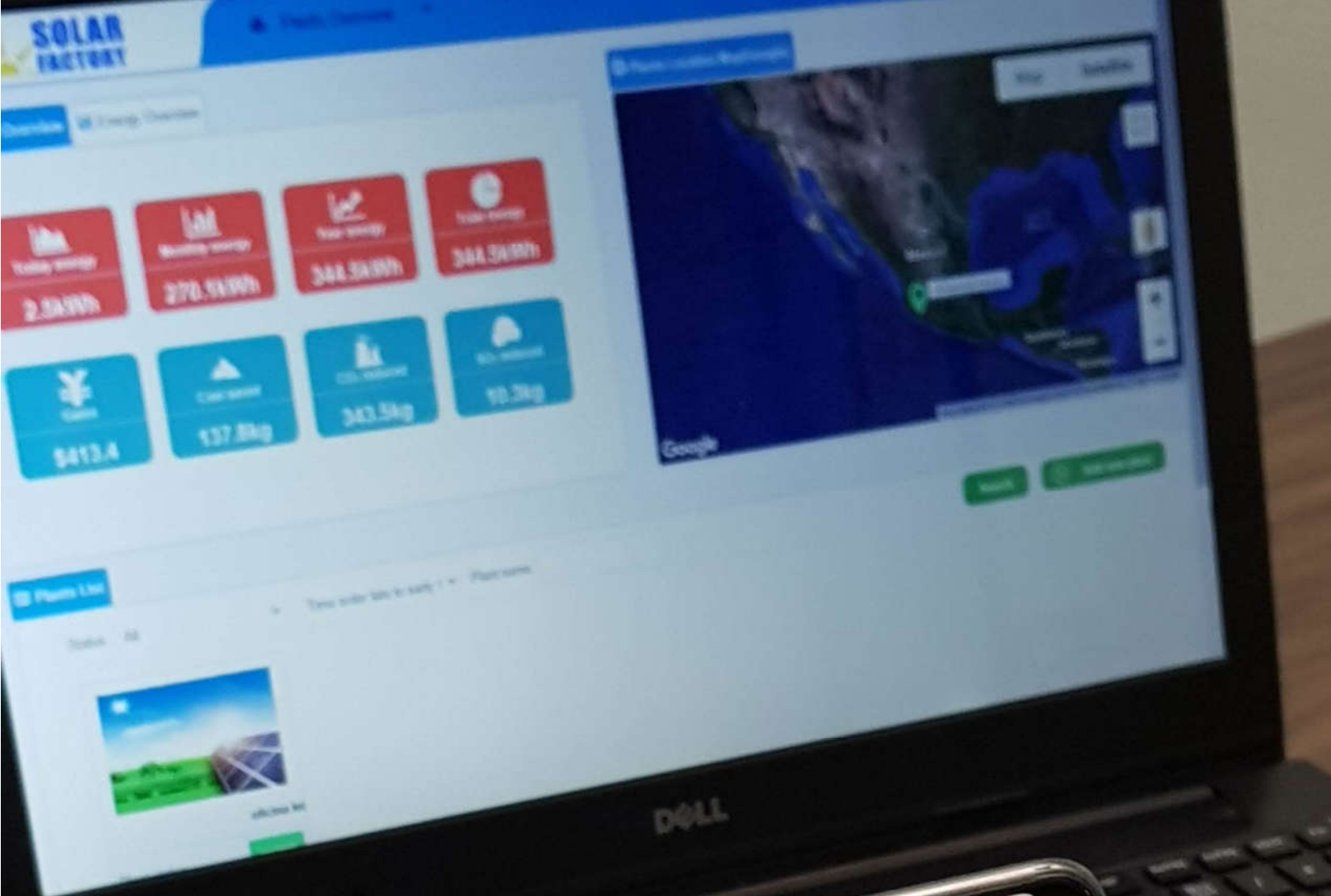
MAX. EFFICIENCY	97.6%
EURO EFFICIENCY	97.2%
MPPT EFFICIENCY	99.9%

PROTECTION DEVICES

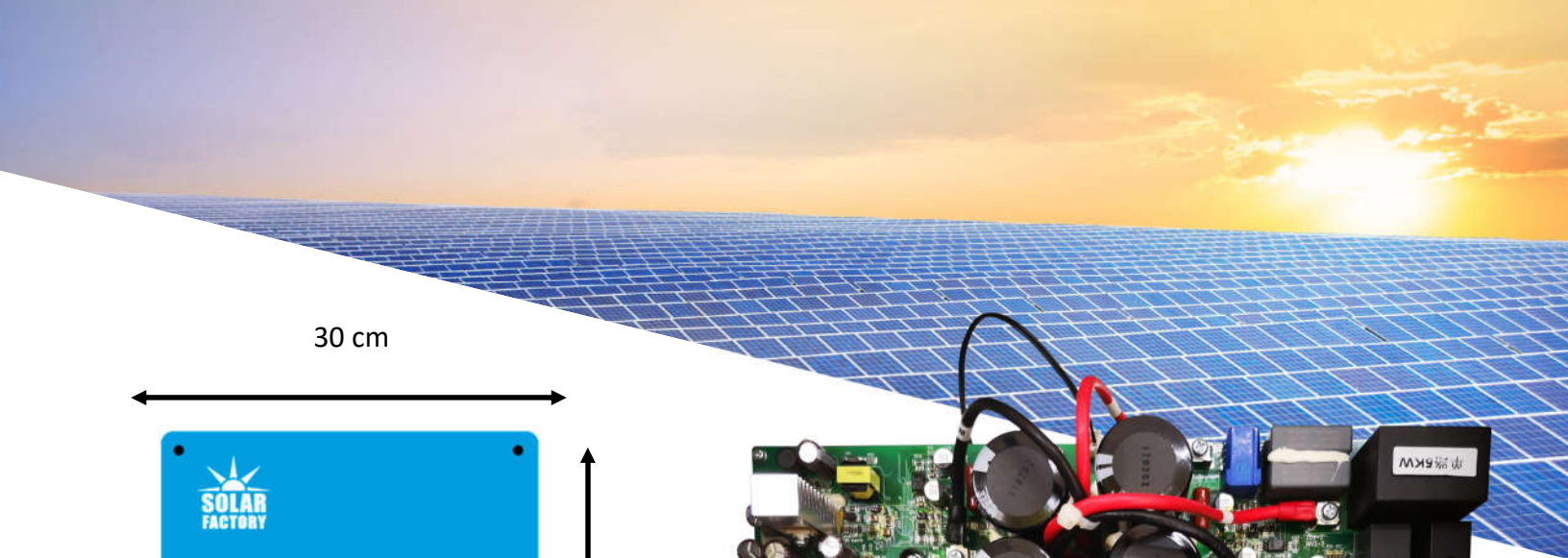
DC REVERSE POLARITY PROTECTION	INTEGRATED
DC SWITCH FOR EACH MPPT	INTEGRATED (OPT)
OUTPUT OVER CURRENT PROTECTION	INTEGRATED
OUTPUT OVER VOLTAGE PROTECTION	INTEGRATED
GROUND FAULT MONITORING	INTEGRATED
GRID MONITORING	INTEGRATED
LEAKAGE CURRENT PROTECION	INTEGRATED
ISLAND PROTECTION	INTEGRATED

CERTIFICATIONS

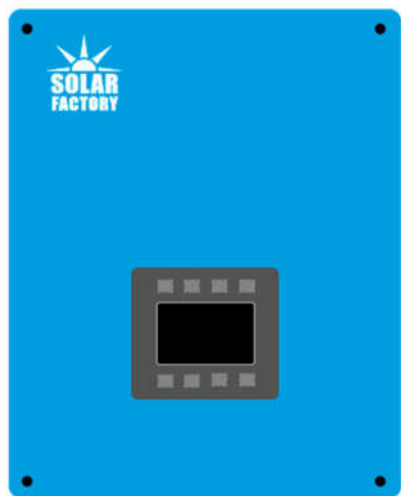




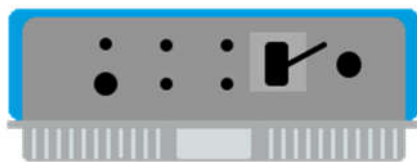
**SOLAR FACTORY GLOBAL
MONITOR PLATAFORM**



30 cm



41.5 cm



18.5 cm

