

# GRID-ON INVERTER 6 KW

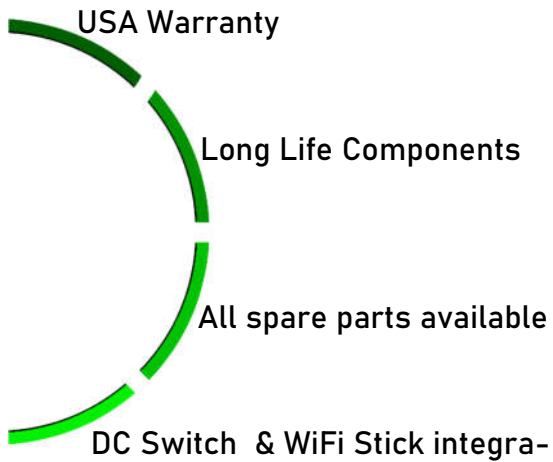
Model: **ISF-6KW**

## FOR PHOTOVOLTAIC SYSTEMS



# ISF-6KW

Pure Wave Inverter 6,000 W



Inverter On-Grid of 6000 W maximum input DC power... 5,400W AC output of nominal power, Manufactured in USA, 10 years of warranty, Best quality for the best world: High performance electronic, High efficiency 97.6%, High PF .999, Good protection for weather IP 65, Multiple communication, USB 2.0, RJ45 connector and WiFi. 20 KVA surge protection AC output and wide range voltaje: DC 100 - 550 V, AC 180 - 280 V



**SOLAR FACTORY**  
by LED MEXICO



DISTRIBUIDOR  
EXCLUSIVO  
LATINOAMERICA



## General Data

|                              |                     |
|------------------------------|---------------------|
| MEASURES (WxHxD)             | 355x395x170 mm      |
| WEIGHT                       | 17.10 KG            |
| ASSEMBLY MODE                | WALL MOUNTING       |
| OPERATING TEMPERATURE        | -25 A +60 °C        |
| NOISE EMISSION               | 25 db               |
| ALTITUDE                     | 3,000 MSNM          |
| NIGHT SELF-CONSUMPTION       | 0.5 W               |
| ELECTRICAL ISOLATION         | WITHOUT TRANSFORMER |
| COOLING METHOD               | NATURAL VENTILATION |
| DEGREE OF PROTECTION         | IP65                |
| RH                           | 0-98%               |
| MAXIMUM EFFICIENCY           | 97.5 %              |
| MPPT EFFICIENCY              | 99.9 %              |
| TYPE OF CONNECTION INPUT     | H4/MC4              |
| TYPE OF AC OUTLET CONNECTION | C16/3               |
| TYPE OF DISPLAY              | LCD                 |
| TYPE OF COMMUNICATION        | WIFI-USB-ETHERNET   |
| WARRANTY                     | 10 YEARS            |

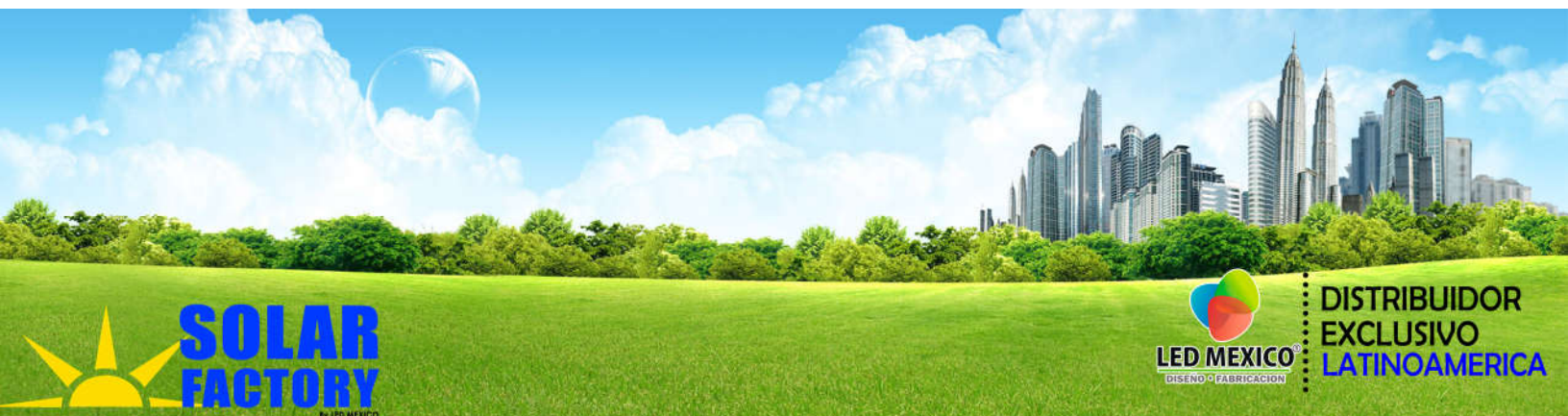
## Features

|                |                  |
|----------------|------------------|
| DC Connection  | H4 / mca         |
| AC Connection  | C16 / 3          |
| Display        | LCD / LED        |
| Communication: | USB, WiFi, RF485 |



- › Reverse polarity protection
- › Anti-islanding protection
- › High current protection
- › Over voltage protection output

- › Isolated Protection
- › Grid network Monitoring
- › Current leak protection
- › CD switch for MPPT



## DC INPUT DATA

|                                       |                     |
|---------------------------------------|---------------------|
| MODEL                                 | ISF-6KW (LS-5000 H) |
| MAXIMUM POWER ON CD                   | 6,000 W             |
| MAXIMUM POWER FOR EACH MPPT           | 6,000 W             |
| MAXIMUM CD VOLTAGE                    | 600 V               |
| STARTING VOLTAGE                      | 100 V               |
| RANGE OF CD VOLTAGE                   | 100-600 V           |
| MPPT VOLTAGE RANGE / NOMINAL VOLTAGE  | 100-550 V/360V      |
| RANGE OF VOLTAGE FROM CD TO FULL LOAD | 250-500 V           |
| MAXIMUM INPUT CURRENT                 | 23.0 Amp            |
| MPPT TRACKING NUMBER                  | 1/2                 |

## OUTPUT DATA AC

|                                      |               |
|--------------------------------------|---------------|
| NOMINAL AC OUTPUT POWER              | 5,000 W       |
| MAXIMUM AC OUTPUT POWER              | 5,500 W       |
| MAXIMUM OUTPUT APPARENT POWER        | 5,500 VA      |
| MAXIMUM OUTPUT CURRENT               | 25 Amp        |
| NOMINAL VOLTAGE OF THE NETWORK       | 220/230/240 V |
| RANGE OF VOLTAGE OF THE NETWORK      | 180-280 V     |
| FREQUENCY RANGE OF THE NETWORK       | 60 HZ +- 5 HZ |
| POWER FACTOR                         | 0.99          |
| HARMONIC CURRENTS                    | < 3%          |
| TYPE OF CONNECTION TO THE AC NETWORK | MONOPHASE     |

## EFFICIENCY

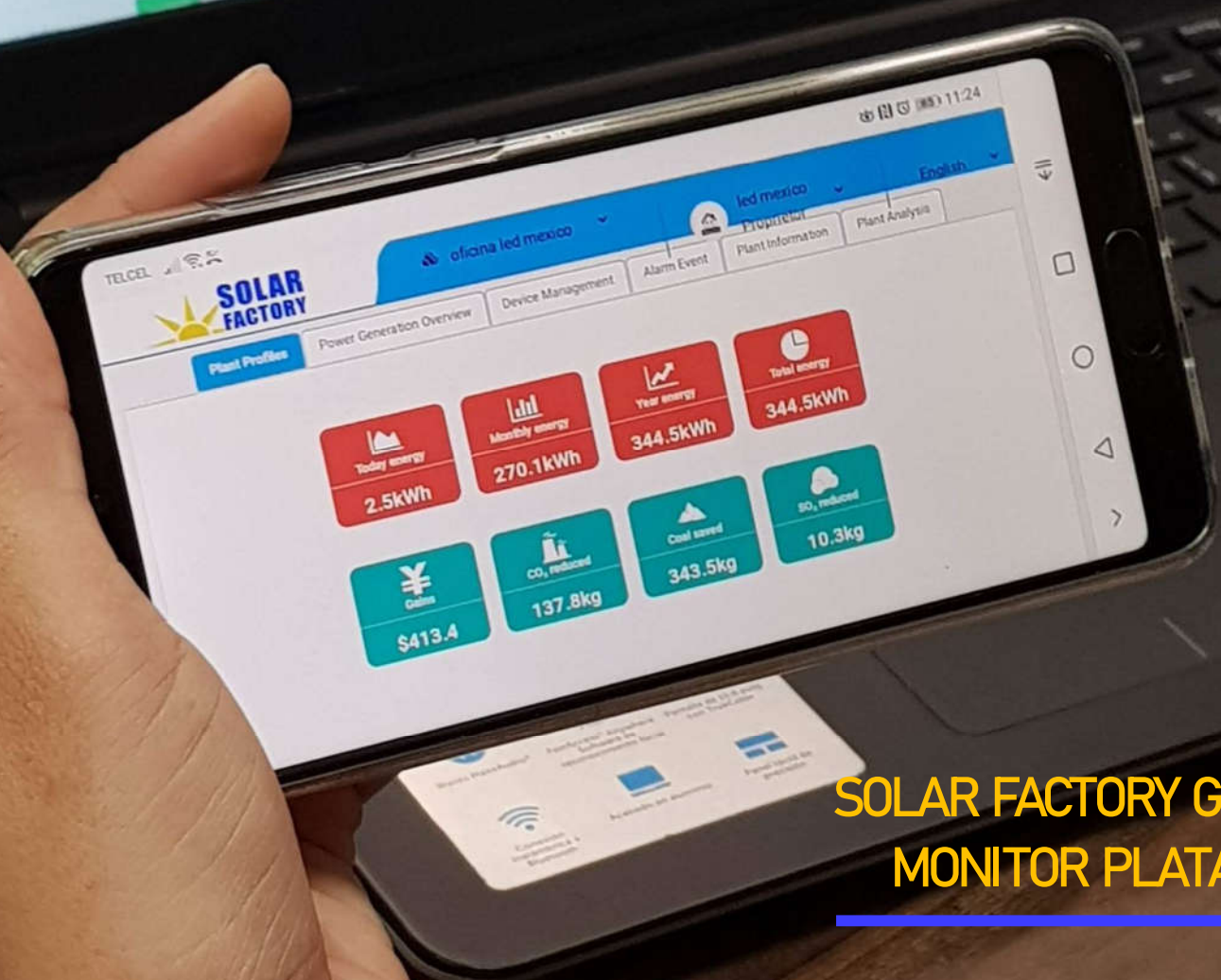
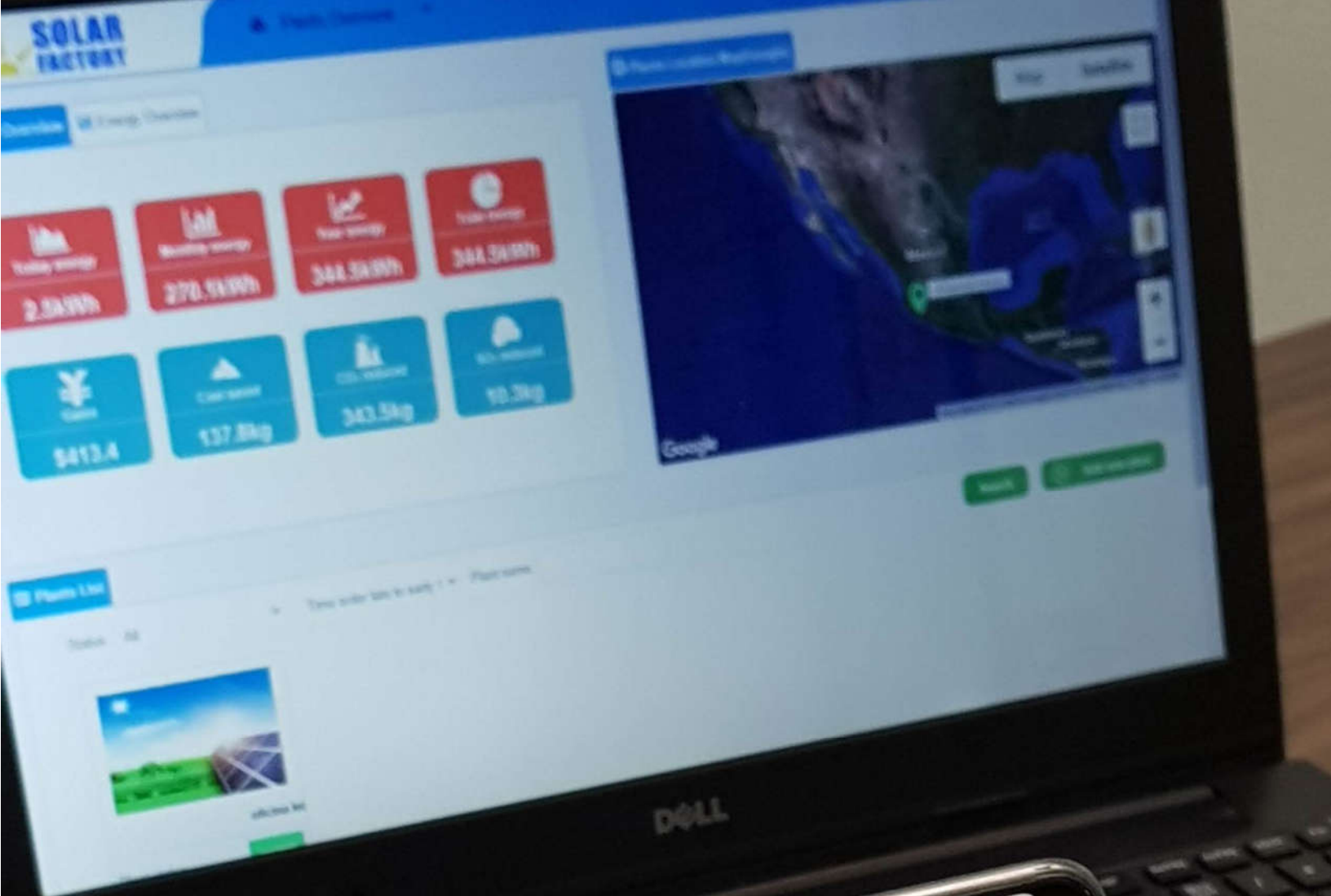
|                 |       |
|-----------------|-------|
| MAX. EFFICIENCY | 97.6% |
| EURO EFFICIENCY | 97.2% |
| MPPT EFFICIENCY | 99.9% |

## PROTECTION DEVICES

|                                |                  |
|--------------------------------|------------------|
| DC REVERSE POLARITY PROTECTION | INTEGRATED       |
| DC SWITCH FOR EACH MPPT        | INTEGRATED (OPT) |
| OUTPUT OVER CURRENT PROTECTION | INTEGRATED       |
| OUTPUT OVER VOLTAGE PROTECTION | INTEGRATED       |
| GROUND FAULT MONITORING        | INTEGRATED       |
| GRID MONITORING                | INTEGRATED       |
| LEAKAGE CURRENT PROTECION      | INTEGRATED       |
| ISLAND PROTECTION              | INTEGRATED       |







**SOLAR FACTORY GLOBAL  
MONITOR PLATAFORM**

